

# NORTH – SOUTH

---

*A Very Welsh Exhibition*



Self Portrait no.3

# ABOUT THE EXHIBITION

.....

*Since studying portraiture in Florence Daniel continues to paint his works from life and enjoys all the advantages of painting in situ working with the changing seasons and natural light.*

*In 2019 The National Library of Wales added 'Self portrait no.3' (on the left) to their iconic collection and Daniel's painting of friend Tim was also selected for the Jackson's art award.*

*In between commissions Daniel has been exploring Wales to create a painted explorative journey of the most-loved and hidden treasures of Wales. The result is this collection of oil landscapes inspired by nature & light that has taken 2 years to paint. There is also an installation which you can read more about in the interview with [www.discoverdyfi.com](http://www.discoverdyfi.com) & view online in the immersive exhibition video at [www.danieljamesyeomans.com](http://www.danieljamesyeomans.com)*

*"There is no accounting for the welsh weather - I encountered every type possible and sometimes all in a days work!"*

*- Daniel J. Yeomans*



# PAINTING A STRANGER

## *Self Portrait no.2*

*This painting featured on Sky Arts portrait  
artist of the year in 2017 and is the first  
painting to greet you upon entering the  
exhibition.*

.....







# ANGLESEY

*My travels start here*





*Throughout the last 2 years Anglesey has been a constant source of inspiration. With it's rugged coastline, hidden coves and beautiful landmarks it was constantly pulling me north.*

*South Stack | 60x35cm | Oil on Canvas*





*Awaiting the Regatta | 60x35cm | Oil on canvas)*





*Hay bales bay the Irish Sea | 75x50cm | Oil on canvas*





*The Old Vicarage | oil on canvas | 80x50cm*





*Boats in the Mist | Oil on canvas | 55x35cm*





# JOHNNY & BRIDEY

---

- *A portrait of a friend. Johnny and the horses at his house are a real inspiration for me. This was my first attempt at putting together an intimate composition of horse and owner in the stable which was quite a challenge. The portrait was painted from life partly in the studio and partly in the stables on and off over the course of a few months.*





# AN ENCHANTING WINTER

---

*Mid Wales under snow*

*The Road Home | Oil on canvas | 60x35cm*





*The first snowfall | Oil on canvas | 70x50cm*



*Bluebells above a  
blanket of fog |  
60x50 | Oil on  
canvas*



*Llyn Cau,  
Cadair Idris |  
55x35 | Oil  
on canvas*







*Hay bales at the foot of Snowdon | 60x35cm | Oil on canvas*



“

Painting Wales I accounted every type  
of weather, and sometimes all in a  
days work!

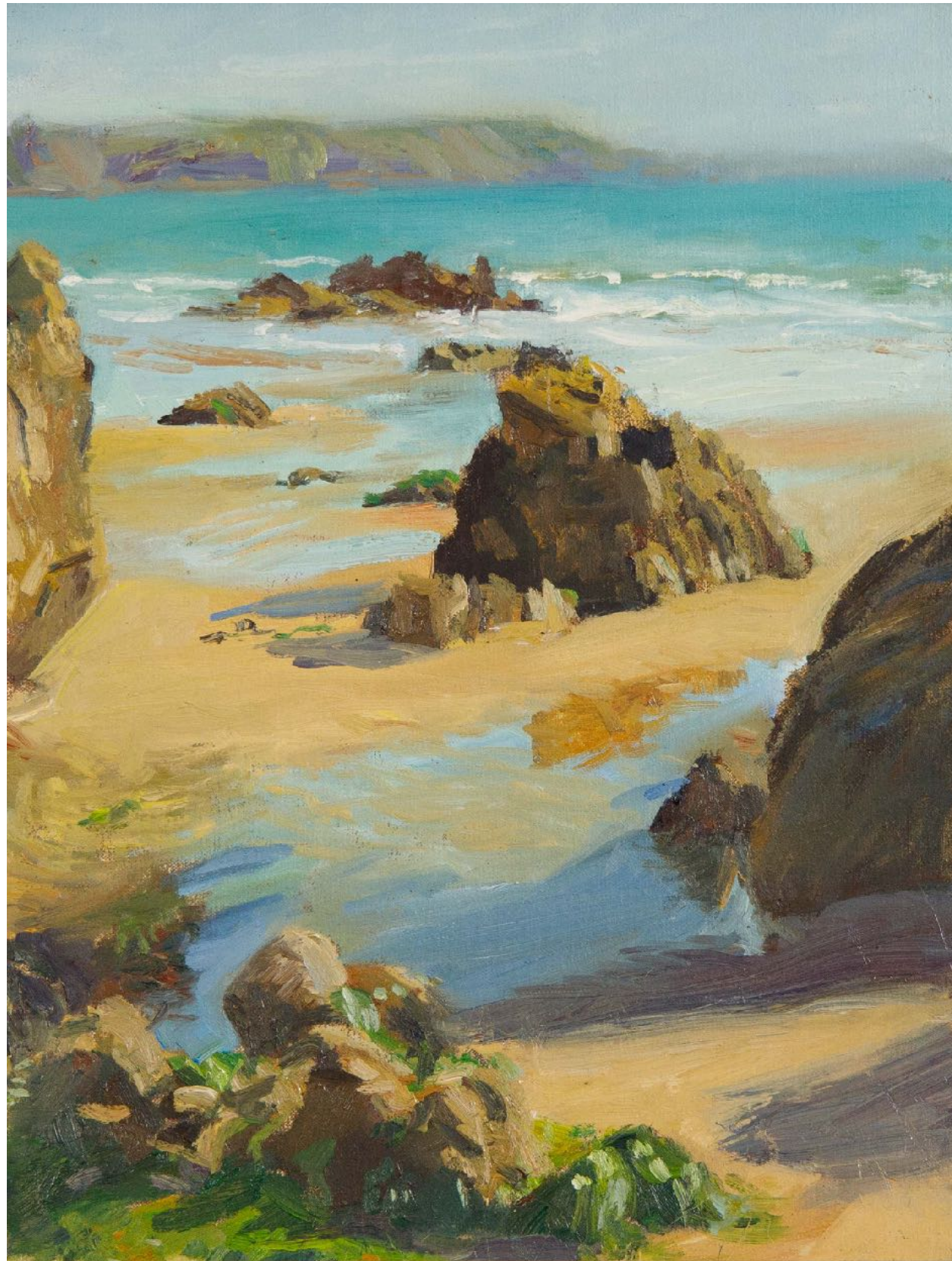
*-Daniel James Yeomans*





*Marloes with evening sun effect | 75x50cm | Oil on canvas*





*Rocks on Marloes Sands | Oil on canvas | 35x50cm*





# ST DAVIDS

*Inspired by the smell and sound of the Sea*

*Blues and a little pink | 60x35cm | Oil on canvas*





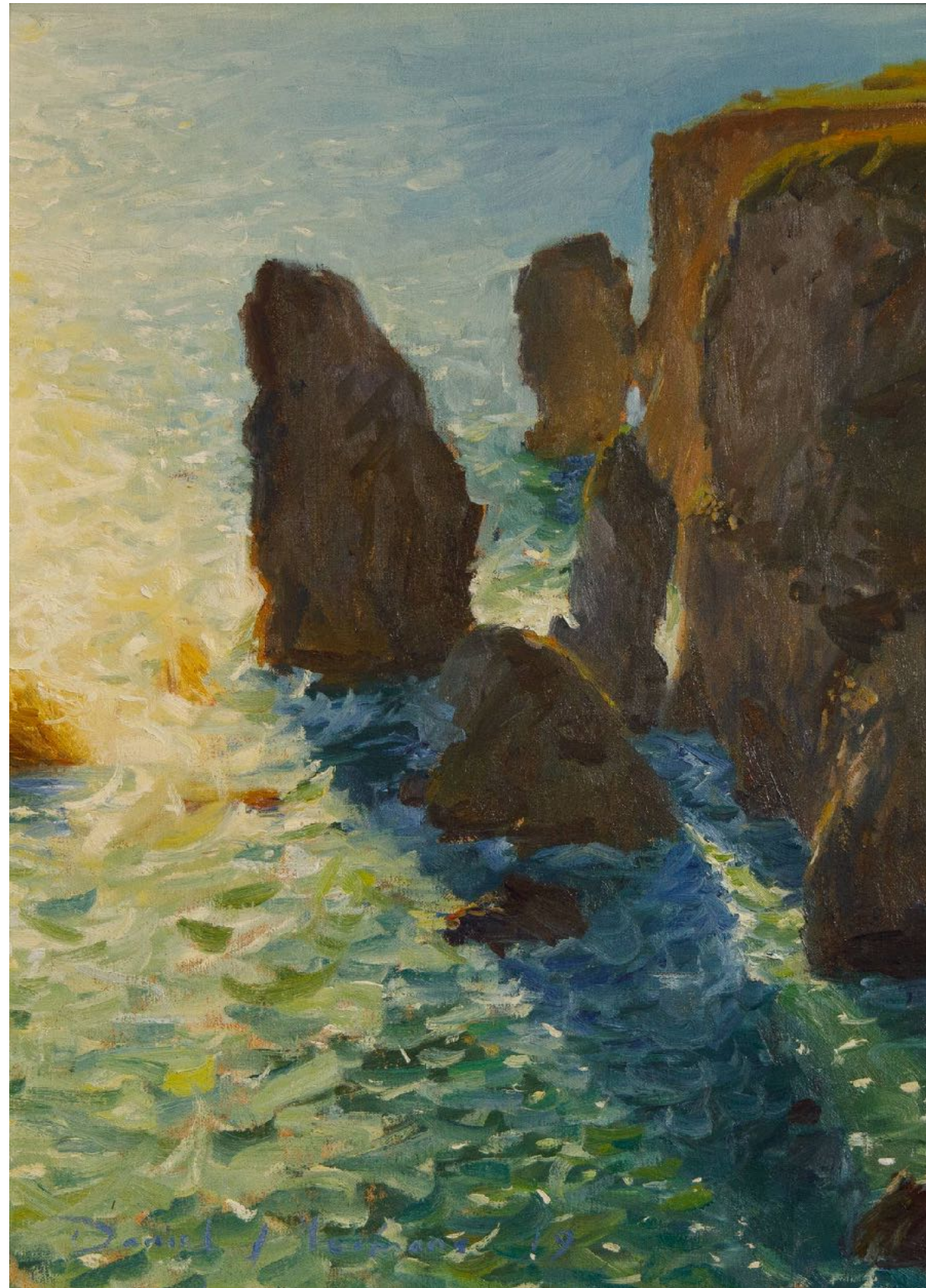
*The Sound of the Sea Below | Oil on canvas | 75x50cm*





*Autumnal Equinox - Porthclais | Oil on canvas | 40x60cm*





*Pembrokeshire Sea Stacks | Oil on canvas | 40x55cm*





*The Green Bridge of Wales | Oil on canvas | 50x75cm*





*Moonlight on the Estuary | 35x60cm | Oil on canvas)*